

図2 江戸市中の震度分布。(背景は国土地理院のデジタル標高地形図「東京都区部」による。)

武蔵野台地, 谷底低地および埋立地, 東京低地で震度が異なる。

Fig. 2. Distribution of Intensities in Edo city. (The background image is the present Tokyo topography by GSI.)

Intensities vary in Musashino Plateau, lowland valleys, claimed land, and Tokyo lowland.

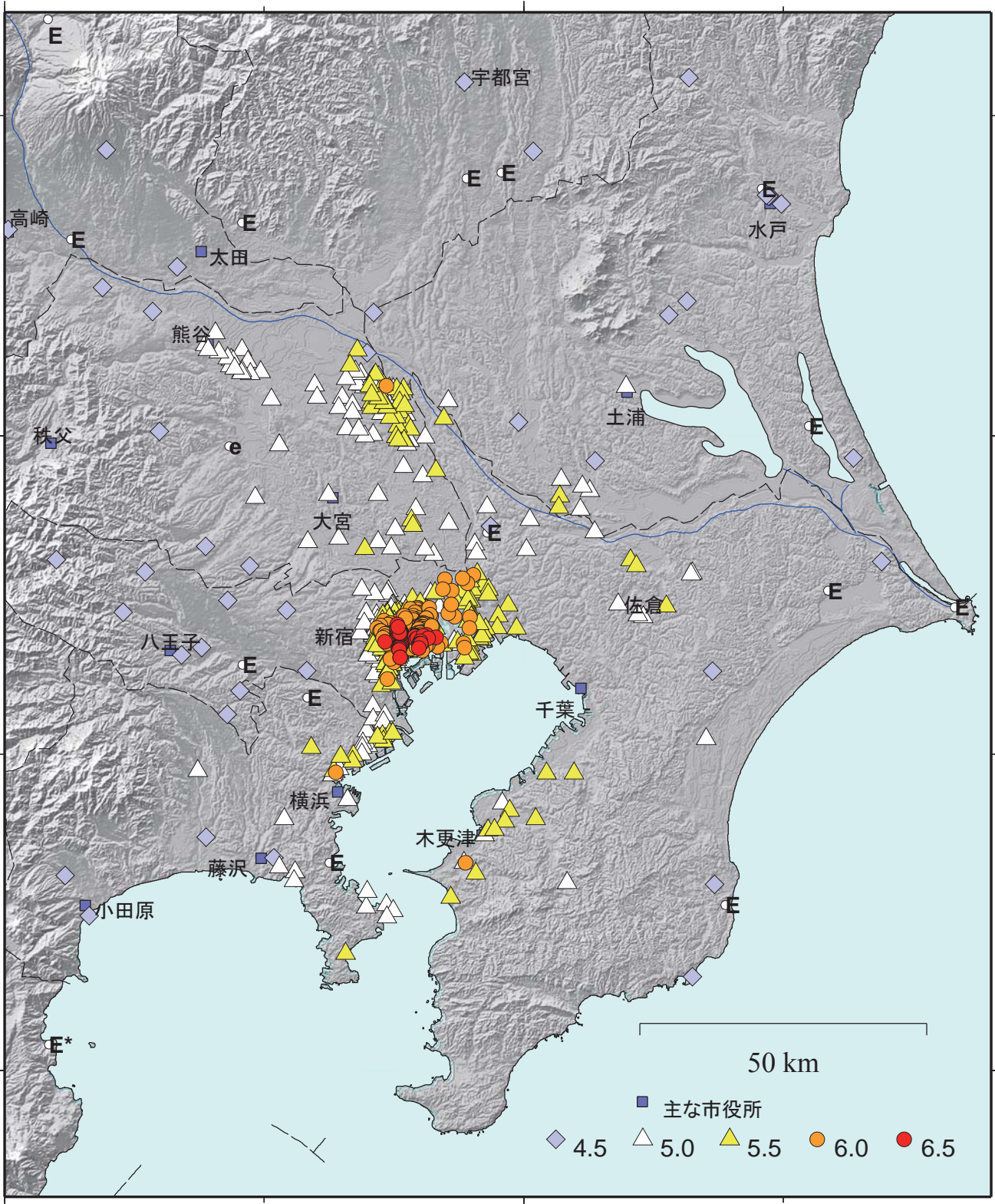


図 3 関東地方の震度分布.

E, e は史料中の記述「大地震」, 「地震」を示す.

Fig. 3. Distribution map of intensities in Kanto District.

“E” and “e” represent “large earthquake” and “earthquake” described in historical materials, respectively.

口絵 3. 中村・松浦 図6(本文 p.45)

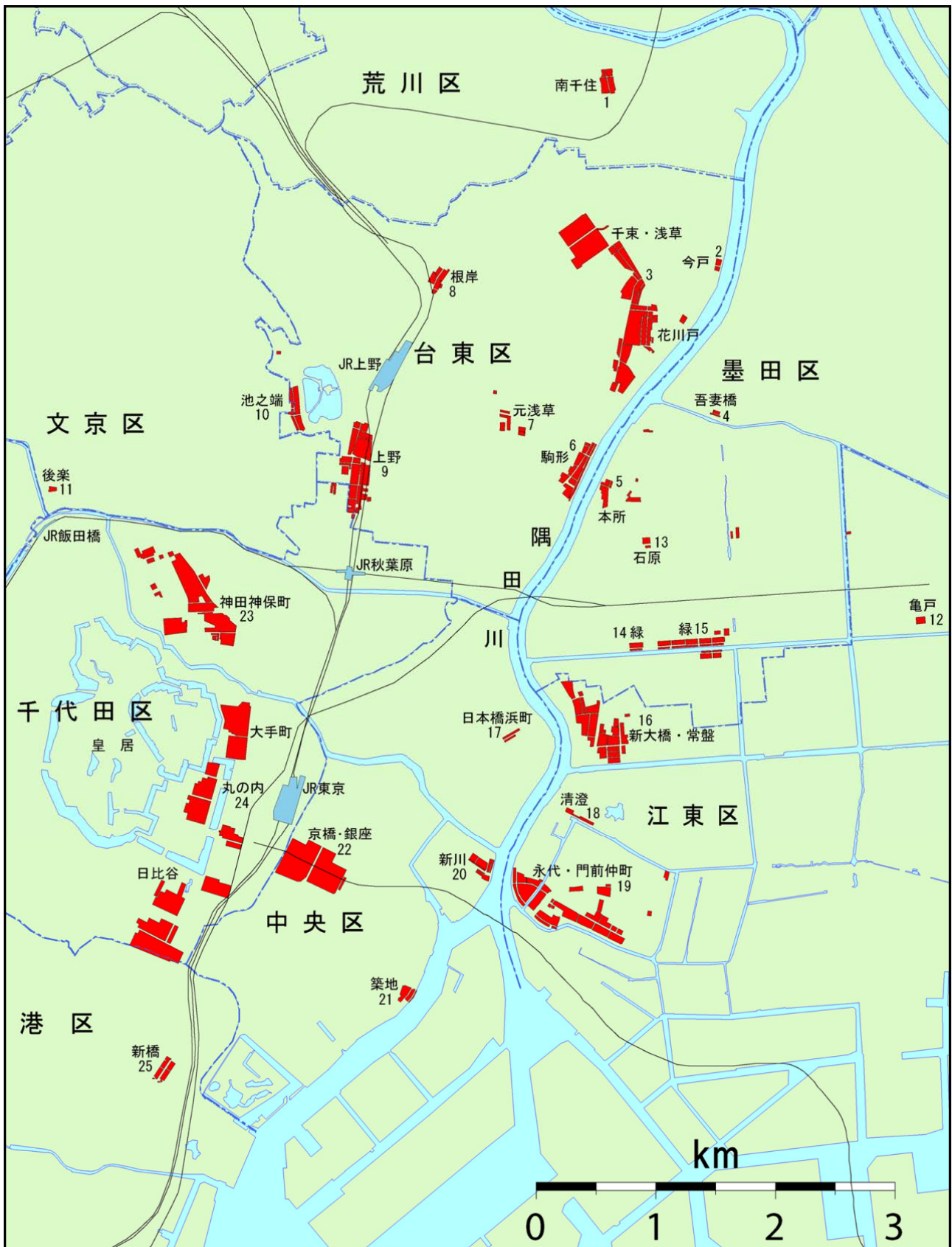


図6 江戸市中の焼失地域 [中村・他(2005)]. 出火は40~50ヶ所あったものと考えられる.

Fig. 6. Burned out areas in Edo city.

We found that fires broke out from 40 – 50 points in the city after Ansei Edo earthquake.